

D

C

B

A

D

C

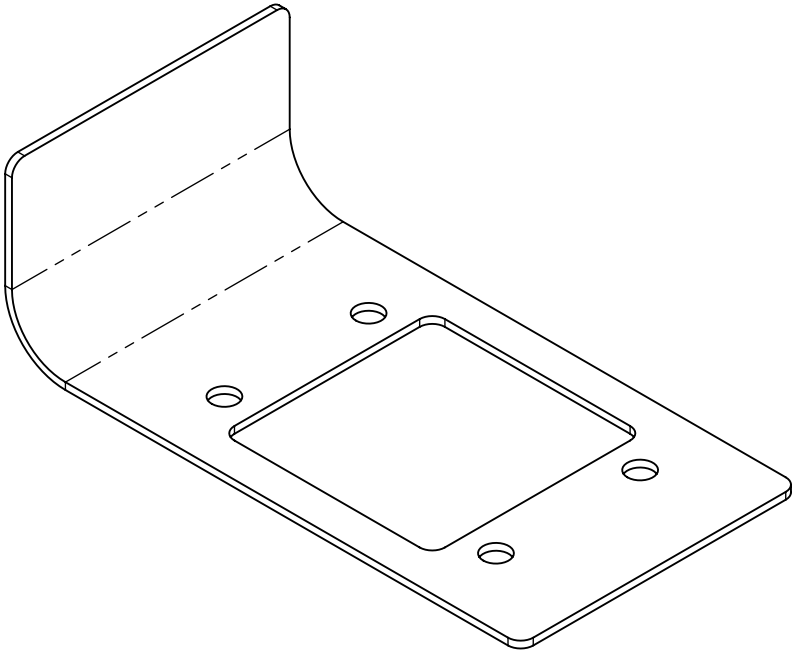
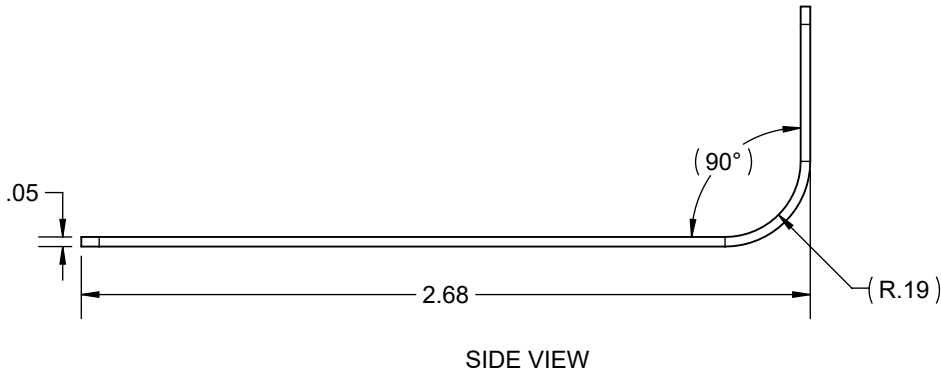
B

A

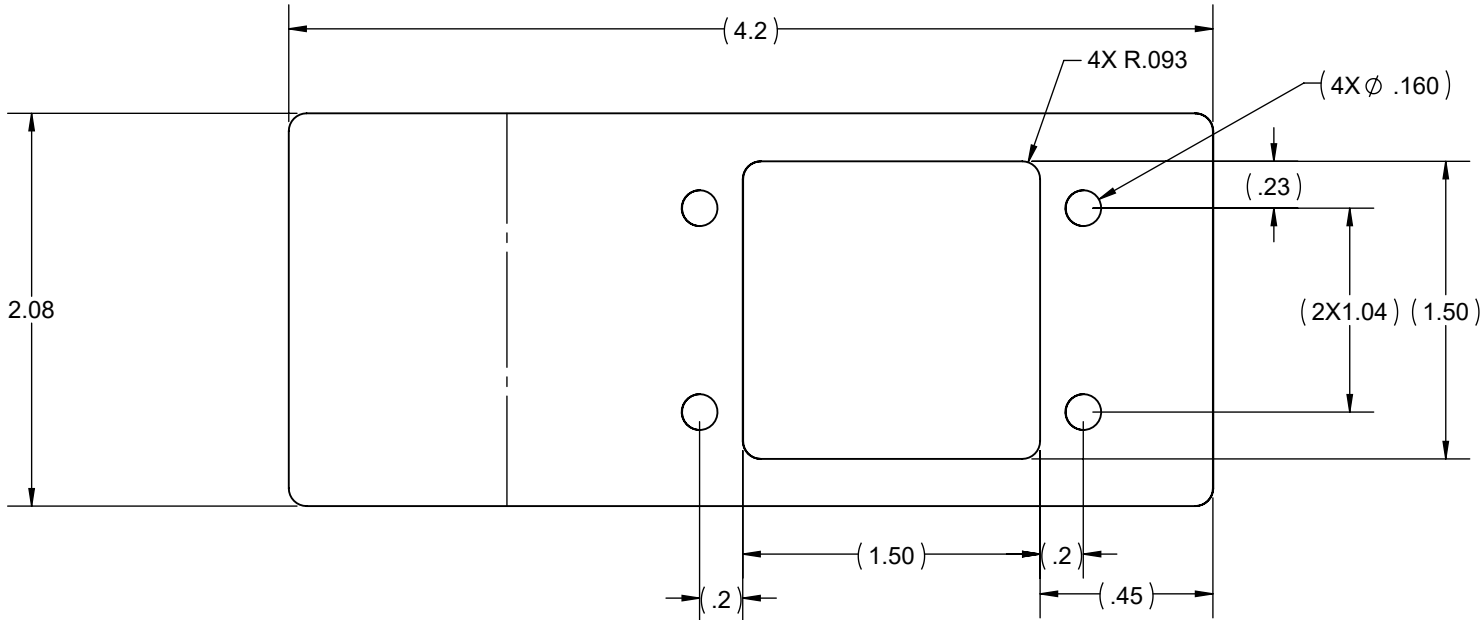
NOTES:

1. BREAK SHARP EDGES AND REMOVE ALL BURRS.
2. FINSH: APPLY CHEMICAL CONVERSION COATING PER MIL-DTL-5541 TYPE 1 CLASS 3 AND PRIMER PER MIL-PRF-23377 TYPE 1 CLASS OPTIONAL.
3. PART MARK OR BAG AND TAG WITH INDELIBLE INK, CONTRASTING COLOR, CAPITAL LETTERING INCLUDING FULL PART NUMBER, DRAWING REVISION.

| REV. | DESCRIPTION | DRAWN | CHECKED | APPROVED |
|------|--------------------|----------------|-------------------|------------------|
| IR | INITAL RELEASE | - | - | - |
| A | UPDATED DIMENSIONS | M BAIG 10/7/20 | L WILDING 10/7/20 | D RANKIN 10/7/20 |



ISOMETRIC VIEW



| | | | | |
|--|-----------|--|---|-------------------------|
| 1 | 2.1"X5.1" | 2024-T3.05" SHEET | 2024-T3.05" AMS-QQ-A-250/4 OR AMS-QQ-A-250/5 | |
| ITEM NO. | QTY | MATERIAL | MATERIAL DESCRIPTION | |
| <div>DIMENSIONS ARE IN INCHES UNLESS OTHERWISE NOTED THIRD ANGLE PROJECTION</div> <div></div> <div>TOLERANCES UNLESS OTHERWISE SPECIFIED: X = ± .100 .X = ± .050 .XX = ± .030 .XXX = ± .010 X° = ± 2° .X° = ± 1°</div> | | <div>PROPRIETARY AND CONFIDENTIAL</div> <div>ALL THE INFORMATION CONTAINED IN THIS DRAWING IS PROPRIETARY TO PEREGRINE. ANY USE, DISCLOSURE OR REPRODUCTION OF THIS DATA IN PART OR WHOLE WITHOUT THE WRITTEN PERMISSION OF PEREGRINE IS PROHIBITED.</div> | <div>PEREGRINE 7385 SOUTH PEORIA STREET UNIT C4 ENGLEWOOD, CO 80112</div> <div>TITLE: RELAY MOUNTING BRACKET</div> <div>DWG. NO. PA-200124-303 REV. A</div> | |
| | | | DWG SIZE: B | SCALE: 1:1 SHEET 1 OF 1 |

| | |
|----------|-------------------|
| APPROVED | J KISTLER 10/1/20 |
| CHECKED | L WILDING 9/30/20 |
| DRAWN | M BAIG 9/25/20 |